



Cell image © 2006 Novartis AG

Visit the STP Web site at
www.toxpath.org



Society of Toxicologic Pathology

What is Toxicologic Pathology?

Toxicologic pathology is a medical discipline that applies the professional practice of pathology—the study of diseases—to toxicology—the study of the effects of xenobiotics and other potentially toxic agents on humans and animals.

Toxicologic pathologists are individuals working in toxicology or safety testing, and use traditional clinical or anatomic pathology as well as contemporary advances in molecular and cellular biology. They are dedicated to the integration of toxicologic pathology into hazard identification and risk assessment for the protection of human and animal health.

The Organization

The STP was incorporated as a not-for-profit, scientific, and educational organization in 1971. The Society's 1,200 members from 22 different countries are scientists and professionals who work in academic institutions, government, and private industry.

The Society's Vision

Be an international leader for improvement of human and animal health using an interdisciplinary scientific approach based in pathology and toxicology. This is accomplished through four primary goals:

- Recruitment, advocacy, globalization, and education
- Increase the supply of toxicologic pathologists.
- Be an authoritative resource for legislative and regulatory decision-makers.
- Participate in international regulatory and health issues.
- Collaborate with allied organizations.

Non-member access:

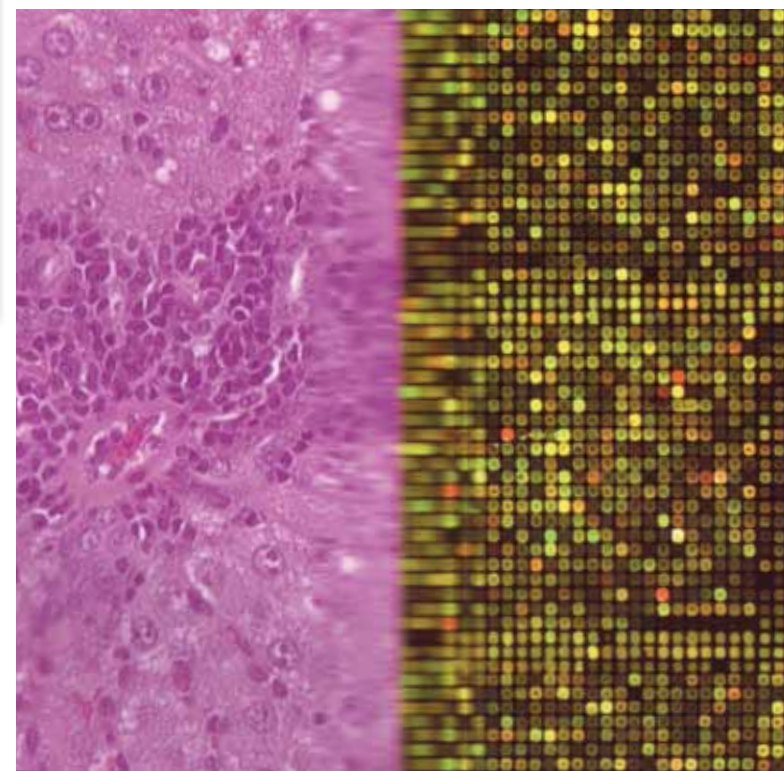
- Published STP position papers
- Career development services with job postings
- What's Your Diagnosis? A regularly posted pathology case to test your knowledge
- ToXPath forum, an internet-based discussion of pathology, techniques, and regulatory issues
- Standardized rat nomenclature



Full member access:

- Early drafts of position papers
- Full-text articles from *Toxicologic Pathology*
- STP business activities
- STP membership database
- Surveys conducted by the Scientific and Regulatory Policy Committee
- Career surveys
- Presentations on toxicologic pathology for non-pathologists (regulators, toxicologists, and students)
- ToXPath Newsgroup

STP Headquarters
1821 Michael Faraday Drive, Suite 300
Reston, VA 20190
Tel: 703-438-7508
Fax: 703-438-3113
E-mail: stp@toxpath.org



STP is a nonprofit association of pathologists and other scientists whose principal aim is the advancement of pathology as it pertains to changes elicited by pharmacological, chemical, and environmental agents, and factors that modify these responses.

The Society's Journal, *Toxicologic Pathology*

Toxicologic Pathology is the premier, peer-reviewed journal in the field of toxicologic pathology. The Journal publishes bimonthly original articles, papers from the Annual Symposium, brief communications, topical reviews, and position papers on current issues. Full text of *Toxicologic Pathology* from 1972 to present is available on-line.



The Society's Annual Symposium

Each year the STP holds an Annual Symposium, which attracts more than 600 participants. Scientists network, exchange ideas, and present groundbreaking research findings with other leading individuals in the field of toxicologic pathology.

The Annual Symposia scientific programs highlight cutting-edge research in toxicologic pathology, and address contemporary regulatory issues. Frequently there are concurrent National Toxicology Program (NTP) Satellite symposia, continuing education (CE) courses, and exhibitors offering services and products related to the field.

Benefits of Membership

- Network with scientists involved in toxicology and pathology, and interact with leading toxicologic pathology authorities through a unique scientific forum of presentation and publication
- Participate in activities that provide regulatory guidance and influence legislative and regulatory policy.
- Attend the Annual Symposium at a special Membership fee.
- Access professional development services.
- Receive the Society's journal, *Toxicologic Pathology*, and have full text access to the journal on-line.*
- Receive the Society's Newsletter, *The Scope*.
- Have full access to the Society's Web site (www.toxpath.org).
- Be eligible for Student Travel Awards and Young Investigator Awards (Student Members only).
- Participate in the ToXPath Newsgroup, where STP members post ideas, concerns, and interesting cases they wish to share with other members.

**Student members have access to on-line journal and may subscribe to printed journal for \$35.*

Applying for Membership is Easy!

To apply go to www.toxpath.org. Under the "Membership" tab choose "Membership Application" then "Apply for Membership."

If you have any questions, contact the STP at stp@toxpath.org or 703-438-7508.

Applications are reviewed by the Membership Committee quarterly.



Membership Criteria

The Society of Toxicologic Pathology offers Full, Associate, Student, Emeritus, Honorary, and Corporate memberships.

Full Membership: Any person involved in safety assessment, teaching, or research in toxicologic pathology by virtue of training, experience, or scientific contributions.

Associate Membership: Any person with an interest in toxicologic pathology.

Student Membership: Individuals must be enrolled full time in a veterinary or medical graduate or residency program, or must be within the 12 month period following completion of such a program.

Emeritus Member: Any STP Member in good standing who has been a member of the STP for the past ten years, and has fully retired and is not gainfully employed in the field, may be designated an Emeritus Member by the Executive Committee at the member's written request.

Honorary Member: Must have contributed in an extraordinary manner to the advancement of the objectives of the Society. They must be nominated in writing by three Full members.

Corporate Support Opportunities

Thanks to the support of corporations, the STP is able to provide business activities, training scholarships, Young Investigator awards, Student Travel awards, and Student Events. Please consider including the Society in your budget planning.

Please contact stp@toxpath.org if you would like to receive a sponsorship information packet.