



STP Modular Education Course

Toxicologic Pathology of Special Senses

Save the Date!

October 20–23, 2019 • Indianapolis, Indiana

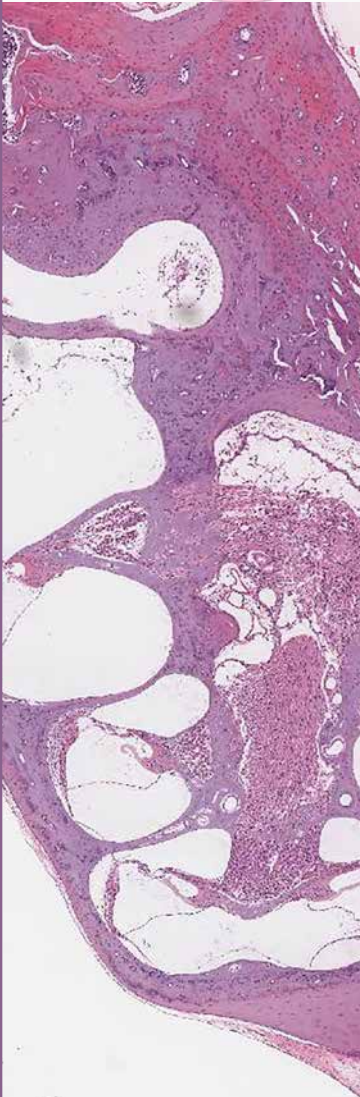


Image Credits:
Eye Image/Alok Sharma and
Ear Image/Tracy Carlson

Tentative Agenda

- Challenging real-world ocular and otic pathology examples from multiple preclinical species
- Review of INHAND special senses nomenclature
- Xenobiotic induced ocular and otic pathology and toxicity with review of innovative technologies
- Comparative anatomy of eye and ear of relevant laboratory species
- Comprehensive review of clinical data and association with histopathologic changes
- Microscopy sessions on non-neoplastic and neoplastic ocular and otic pathology examples
- Comparative anatomy of nasal and tongue histopathology
- Neuropathology of special senses
- Regulatory guidelines and considerations for ocular and otic studies

Call for Case Studies

- Discussion of ocular and otic histopathology examples submitted in advance by you!

On behalf of STP Education Committee

Course Co-Chair: Tracy Carlson (Charles River); Helen Booler (Genentech); Alok Sharma (Covance);

Course Scientific Advisors: Ken Schafer (Vet Path Services); Bradley Njaa (Kansas State University)

**Topics subject to change.*

Registration details to follow. Please contact STP headquarters (stp@toxpath.org) with additional questions.

STP Headquarters: 11190 Sunrise Valley Drive, Suite 300 | Reston, VA | 20191
Tel: 703-438-7508 | Fax: 703-438-3113 | Email: stp@toxpath.org | Website: www.toxpath.org