



## STP Modular Education Course

# Toxicologic Pathology of Special Senses

October 20–23, 2019 • Indianapolis, Indiana

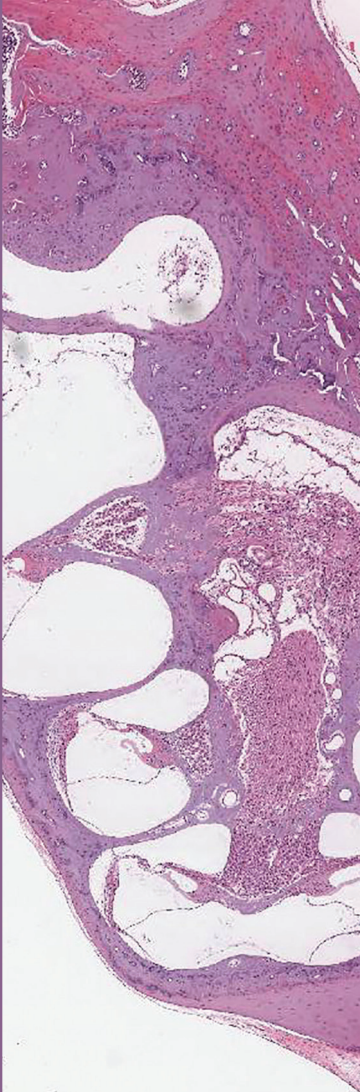
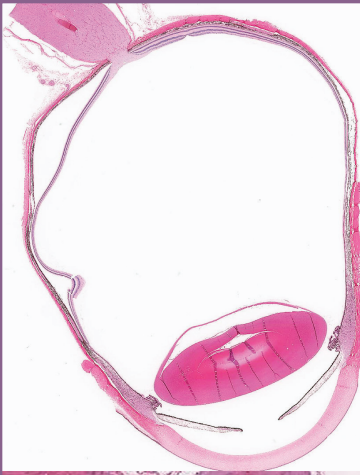


Image Credits:  
Eye Image/Alok Sharma and  
Ear Image/Tracy Carlson

### Tentative Agenda

- Challenging real-world ocular and otic pathology examples from multiple preclinical species
- Review of INHAND special senses nomenclature
- Xenobiotic induced ocular and otic pathology and toxicity with review of innovative technologies
- Comparative anatomy of eye and ear of relevant laboratory species
- Comprehensive review of clinical data and association with histopathologic changes
- Microscopy sessions on non-neoplastic and neoplastic ocular and otic pathology examples
- Comparative anatomy of nasal and tongue histopathology
- Neuropathology of special senses
- Regulatory guidelines and considerations for ocular and otic studies

### Call for Case Studies

- Discussion of ocular and otic histopathology examples submitted in advance by you!

### On behalf of STP Education Committee

**Course Co-Chair:** Tracy Carlson (Charles River); Helen Booler (Genentech); Alok Sharma (Covance);

**Course Scientific Advisors:** Ken Schafer (Vet Path Services); Bradley Njaa (Kansas State University)

*\*Topics subject to change.*

Visit [www.toxpath.org](http://www.toxpath.org) to register and for more information.

STP Headquarters: 11190 Sunrise Valley Drive, Suite 300 | Reston, VA | 20191  
Tel: 703-438-7508 | Fax: 703-438-3113 | Email: [stp@toxpath.org](mailto:stp@toxpath.org) | Website: [www.toxpath.org](http://www.toxpath.org)