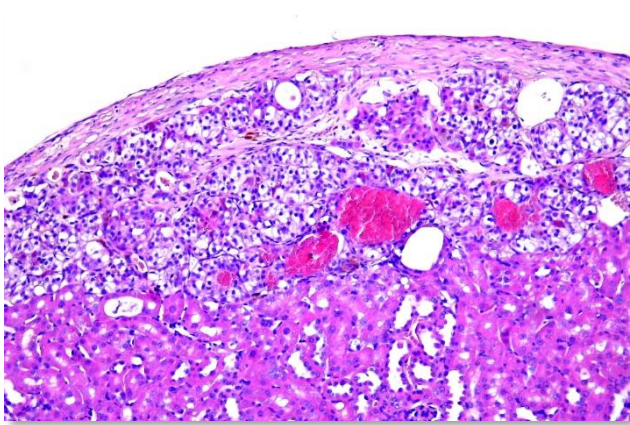


# TOXICOLOGIC PATHOLOGY

## Call for Papers for a Special Issue on: Stem Cell Therapy Development



SCID-Beige diabetic (streptozotocin-induced) mouse that had human embryo-derived stem cells differentiated *in vitro* into pancreatic islet cells and transplanted under the kidney capsule.

### Editor-in-Chief:

Susan A. Elmore, MS, DVM, DACVP,  
DABT, FIATP

### Special Issue Editors:

- Kevin A. Keane, Novo Nordisk, DVM, PhD, FIATP
- Ricardo Ochoa, Pre-Clinical Safety Inc, DVM, Ph.D. DACVP, FIATP
- Jerrold M. Ward, Global Vet Pathology, DVM, Ph.D. DACVP, FIATP

[journals.sagepub.com/home/tpx](http://journals.sagepub.com/home/tpx)

**Toxicologic Pathology** is pleased to announce the publication of a special 2020 issue focusing on Stem Cell-based Therapy Development. Rapid advances in stem cell biology have produced confusion and misinformation on the readiness of this field for clinical use in humans and animals. This peer reviewed special issue will emphasize the issues concerning cell therapies, exemplified but not limited to stem cell and related fields. Major focus will be safety assessment, issues complicating nonclinical development of stem cell therapies, including study design, methods for evaluating histopathology findings, carcinogenicity evaluation, immune compatibility, and solutions to these issues to propel the field into the future therapies. This issue will explore concepts such as the fate of injected stem cells, teratoma formation and neoplasia, ectopic growths, use of autologous induced stem cells, use of stem cells in veterinary medicine and present state of the field. Also included will be issues of terminology and standardization of methods and nomenclature.

This issue will include invited manuscripts and those generated from this targeted call for papers.

**Toxicologic Pathology** reaches the leading authorities and decision makers in this field. This is your opportunity to educate these leaders on innovations and to promote yourself as an industry leader. The benefits of contributing to this special issue include:

- Immediate reach – The issue will be seen immediately by all subscribers. The accepted manuscript will be online and indexed in Pubmed 30-40 days post acceptance.
- Credibility and visibility - Inclusion of papers in this leading journal immediately gives them enhanced credibility and exposure.
- Perpetual online visibility – The special issue will be hosted on the journal's official website in perpetuity.
- Searchable in MEDLINE - All content will be searchable through MEDLINE.

Abstract submissions due: May 1, 2019 to [globalvetpathology@gmail.com](mailto:globalvetpathology@gmail.com).

Manuscripts due: June 1, 2019.

Manuscripts will be reviewed and e-published upon acceptance.

